

CT13 Series

Infrared Radiation Thermometer

- Temperature ranges for 0 to 2000 °C (32 to 3632 °F)
- Response times ≥ 30 ms
- Target size ≥ 1 mm (0.04 in.)
- ± 0.1 °C temperature resolution capability
- Pilot Laser aiming option
- Rugged stainless steel housing, IP68

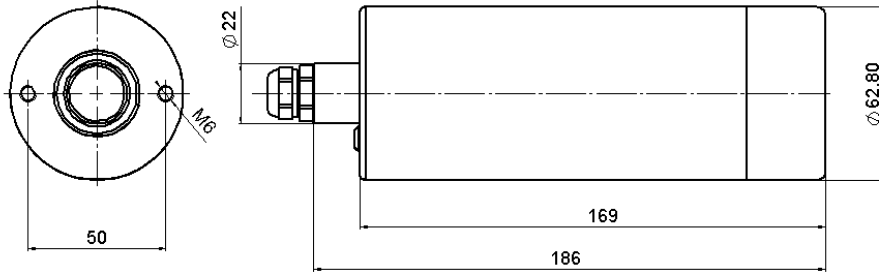


GENERAL SPECIFICATION

Accuracy:	0.8 °C (1.4 °F) \pm 0.8% of difference between target and thermometer temperature
Long term stability:	Better than 0.01% of the absolute measured value per month
Laser Aiming options:	Pilot Laser; Class II, <1mw, 650nm
Emissivity:	0.100 to 1.000 , in 0.001-steps
Response time:	30 ms to 10 s (0.03, 0.1, 0.3, 1, 3, 10 s)
Temperature unit:	°C, °F or K
Analog output:	0 - 20 mA, or 4 - 20 mA, scalable span ≥ 50 °C (100 °F), Actual, max or min value, 12 bit resolution
Serial interface:	RS232, 9.6 to 57.6 kb (Networking via Gateway on Profibus, Ethernet etc options)
Operating voltage:	10.5 to 30 VDC or 12 to 24 VAC (± 10 %) ; ≤ 2.5 W
Permissible ambient temperature:	-25 to 60 °C (-13 to 140 °F); ≤ 300 °C (570 °F) with WK15 Protective Cooling Jacket
Storage temperature:	-40 to 85 °C (-40 to 185 °F)
Protection class:	IP68 (protects up to immersion-like conditions in water – exceeds NEMA4X)
Housing:	304 stainless steel
PC-based Software:	EasyConfig: Software for parameter setting (supplied with each CT13) EasyMeasure: EasyConfig features plus data recording, storage & evaluation (option)
Programmable functions via RS232 interface:	Emissivity, background temperature, analog output scale & function, response time, temperature unit, valley/peak picker with decay function. <u>Optional laser function, trigger input function and/or open collector alarm output</u>

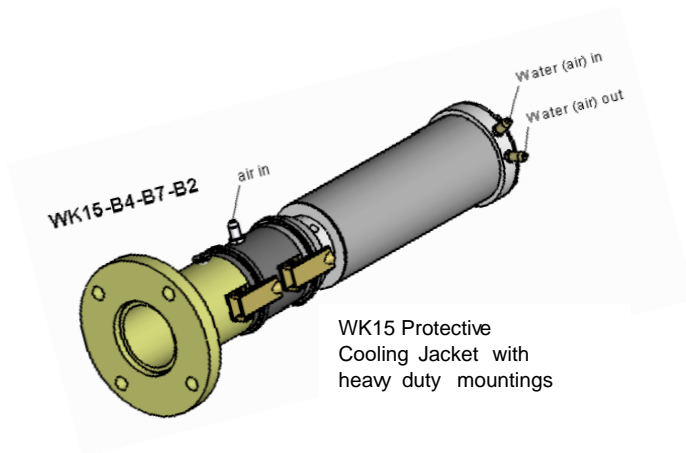
<u>Application / Material</u>	<u>Model/ Spectral Range</u>	<u>Temperature Range / °C</u>
Metals, Combustion Zone temperature for PetroChem industry	CT13.2 / 2 to 2.7 μ m	500 ... 2000
Metals, lower temperature applications	CT13.22 / 2 to 4.5 μ m	140 ... 1000
Thin Film PE, PP, PS , oil film & paint curing	CT13.3i / 3.43 μ m	50 ... 300
Glass & Quartz volume – sub surface	CT13.4 / 3.9 μ m	200 ... 1000
Glass & Quartz surface	CT13.5 / 4.9 to 5.5 μ m	200 ... 1400
Thin Polyester Film, paint curing	CT13.7 / 7.93 μ m	0 ... 400
Glass surface – thin & ultra thin glass	CT13.77/ 7.5to 7.85 μ m	0 ... 1000
Glass surface – thin glass	CT13.8 / 7.5 to 8.2 μ m	0 ... 1000
Paper, Thick Plastics, Rubber, Textiles, Asphalt, Wood Products, Agriculture, Food etc.....	CT13.10 / 8 to 14 μ m	0 ... 900

DIMENSIONS

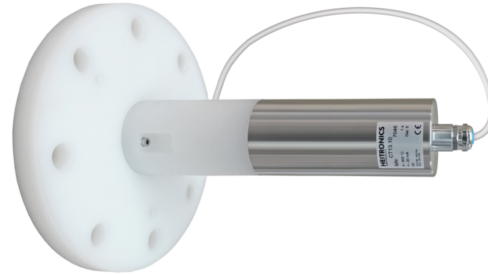


Specify 12 core wiring cable length and jacket material type at time of placing order.....
2m, 5m etc.
PVC, TFE, TPE, PUR

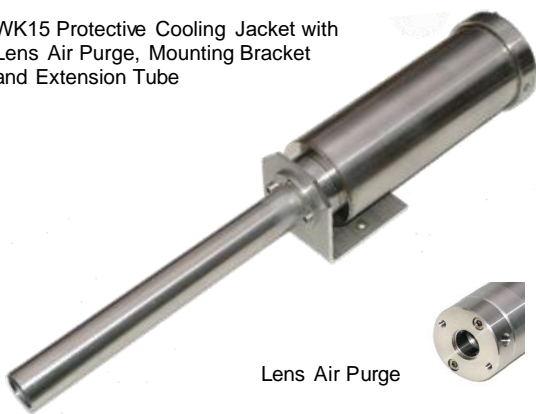
ACCESSORIES and OPTIONS for Housings and Mountings (partial listing of what is available)



CT13 with PVDF Flange and diamond window to protect the lens



WK15 Protective Cooling Jacket with Lens Air Purge, Mounting Bracket and Extension Tube



Lens Air Purge



WK15 Protective Cooling Jacket with Lens Air Purge and Mounting Bracket

CT13 with optional NW-KF25 vacuum flange, NW-KF40 also available

